

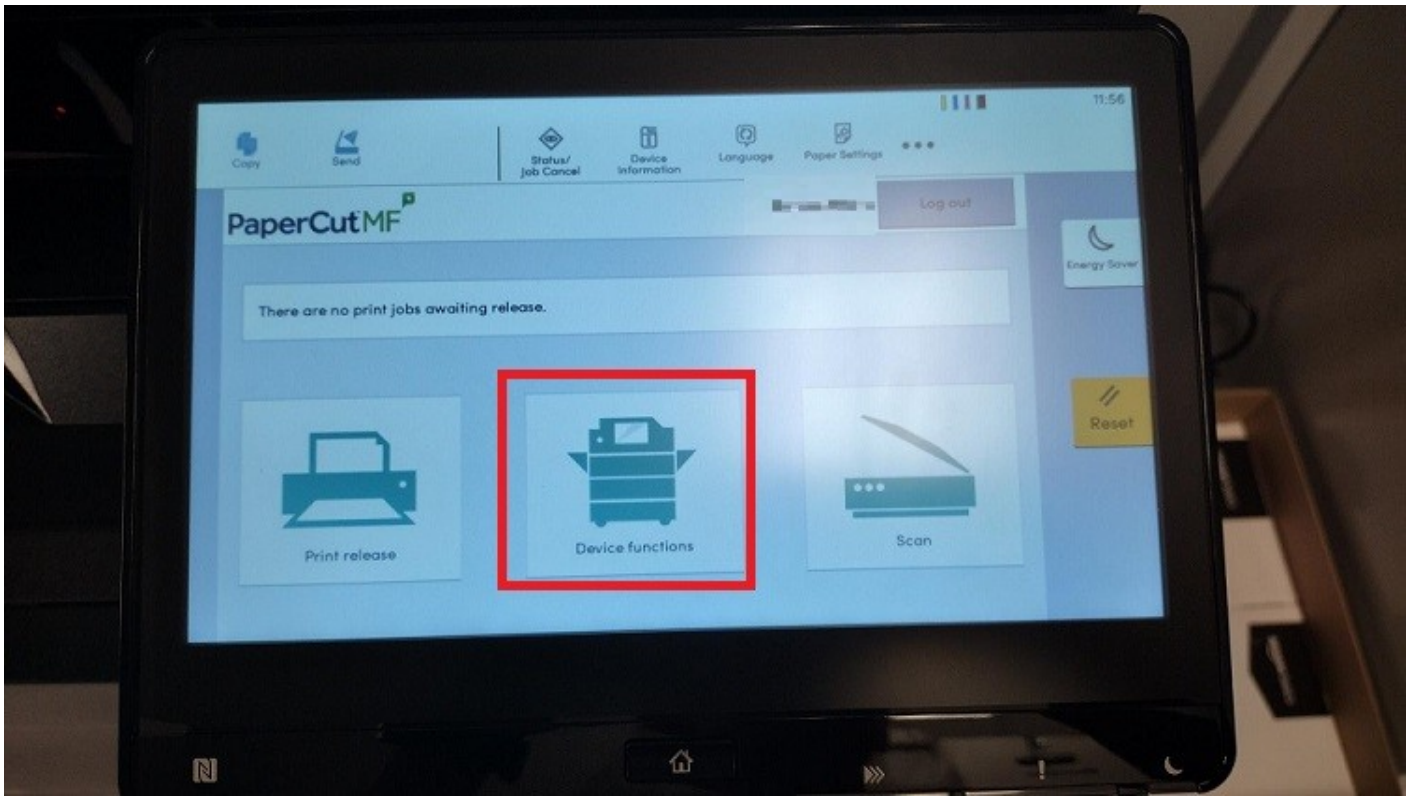
Teaching Assistant on Copiers

How to find Teaching Assistant on the new copier.

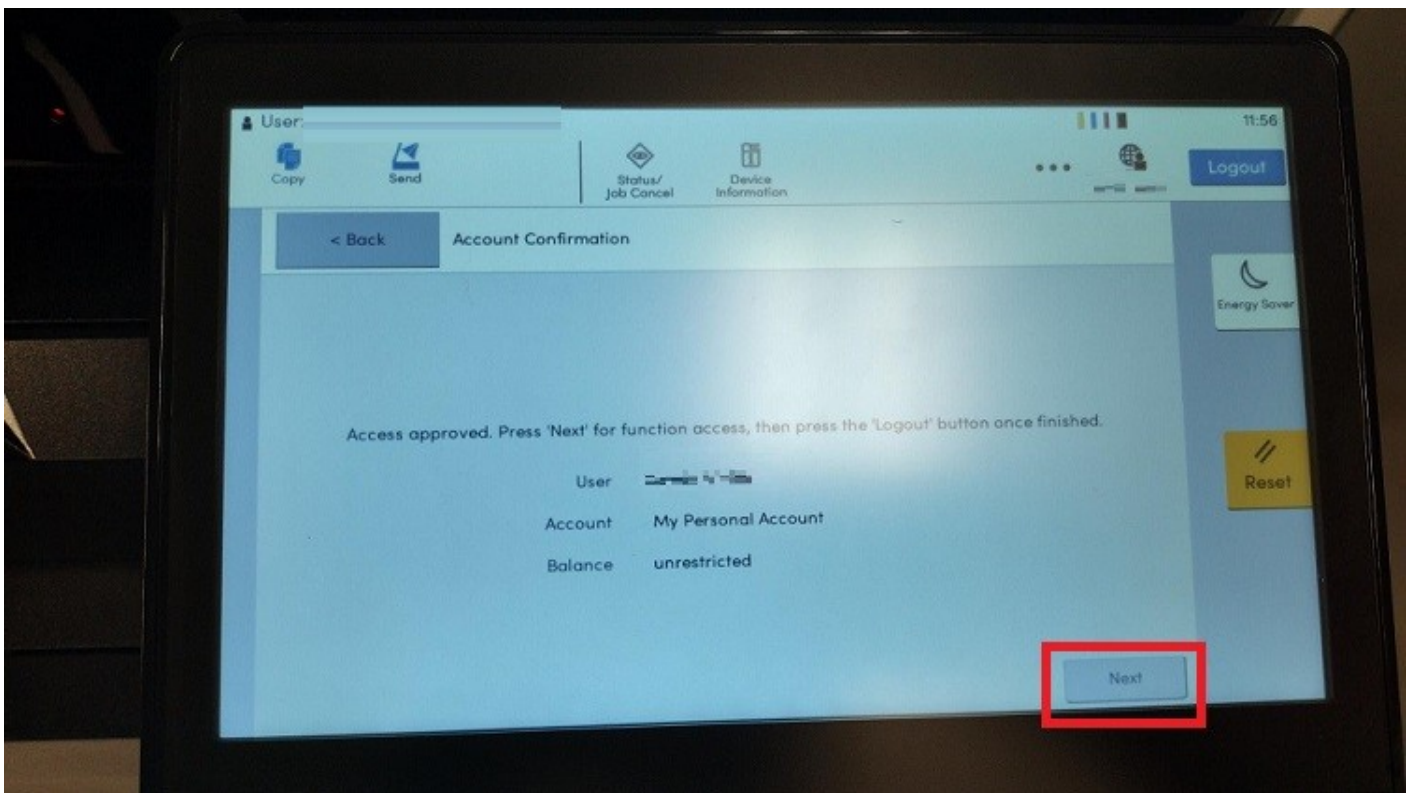
1.) Use your badge to sign into the copier.



2.) Select **Device Functions**.



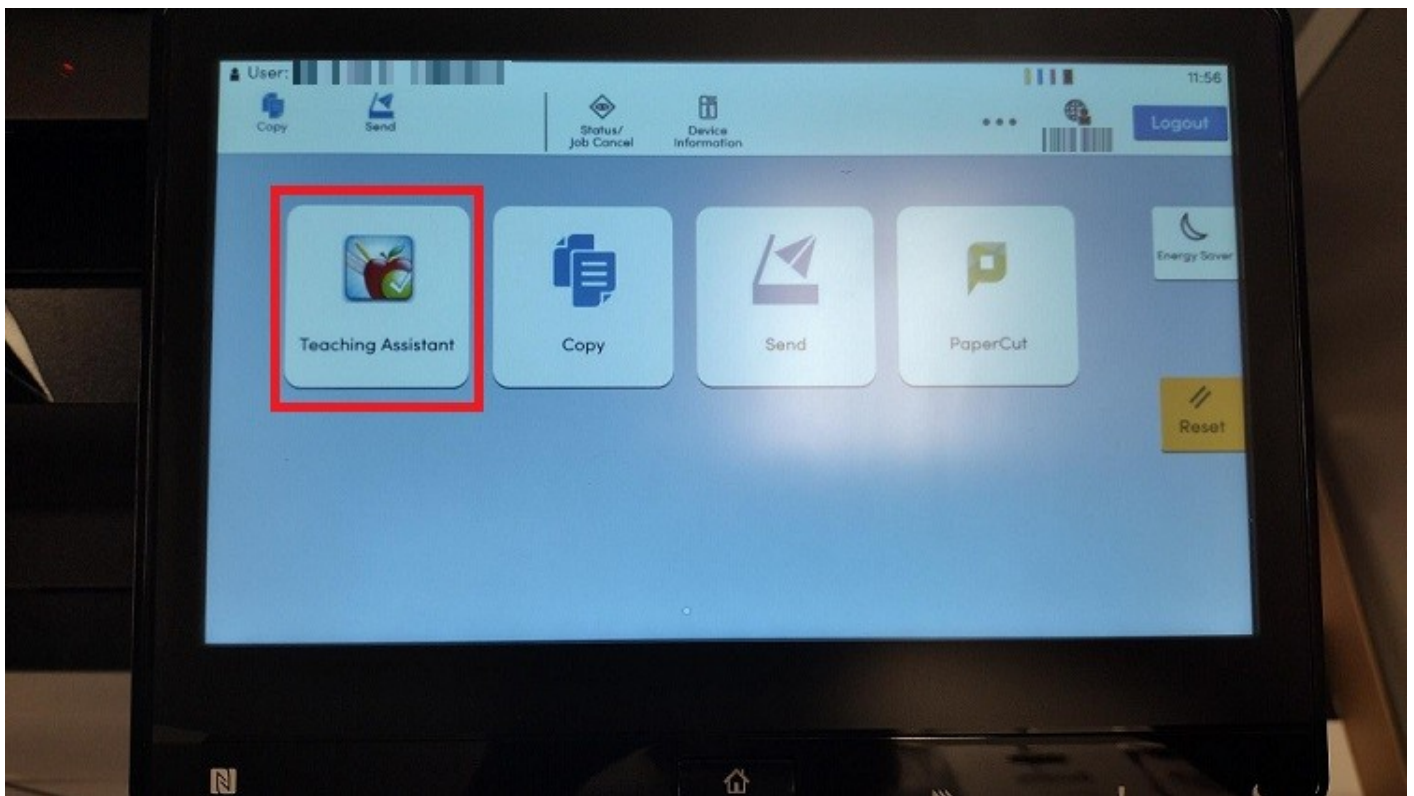
3. Select **Next**.



4. Select the **Home** button at the bottom of the screen. It is a physical button.



5.) Select **Teaching Assistant**.



Revision #1

Created 26 April 2023 14:18:22 by Karrie White

Updated 26 April 2023 15:32:37 by Karrie White